

INDICATIONS

Qora™ Stool Management Kits are indicated for fecal management by diverting and collecting liquid or semi-formed stool to minimize skin contact in bedridden patients.

The device is for use in patients **18 years and older only.**

CONTRAINDICATIONS

The Qora™ Stool Management Kits should not be used on individuals who:

- ✗ have suspected or confirmed rectal mucosal impairment or pathology, i.e. severe proctitis, ischemic proctitis, mucosal ulcerations
- ✗ have had rectal surgery within the last year
- ✗ have any rectal bleeding or anal injury
- ✗ have hemorrhoids of significant size
- ✗ have a rectal or anal stricture or stenosis
- ✗ have or suspected to have tumor(s) in the rectum or anal canal
- ✗ have or suspected to have impacted stool
- ✗ have or suspected to have constipation
- ✗ have any indwelling rectal or anal device or delivery mechanism in place and/or are known to be sensitive to or allergic to any components within the Kit

PRODUCT ORDERING INFORMATION

Product	Catalog Number	Duration of Use	Quantity/Box
Qora™ Aeon (Stool Management Kit)	MG-12015-002	29 days	1
Qora™ AIM (Stool Management Kit) MR Conditional	MG-22014-001	29 days	1
Qora™ Arida (Stool Management Kit)	MG-12014-001	3 days	1
Qora™ Collection Bags (Odor Neutral Collection Bags)	MG-62015-001	-	10



Providing a safe fecal management solution across the continuum of care.

CONTACT US

Consure Medical, Inc.
San Francisco, CA
USA

Phone: +1-800-520-4714
www.consuremedical.com
email: info@consuremedical.com

MSM-043-00 © Consure Medical, Inc.
All rights reserved.



A safe and effective solution for fecal management in bed-ridden patients



Introducing

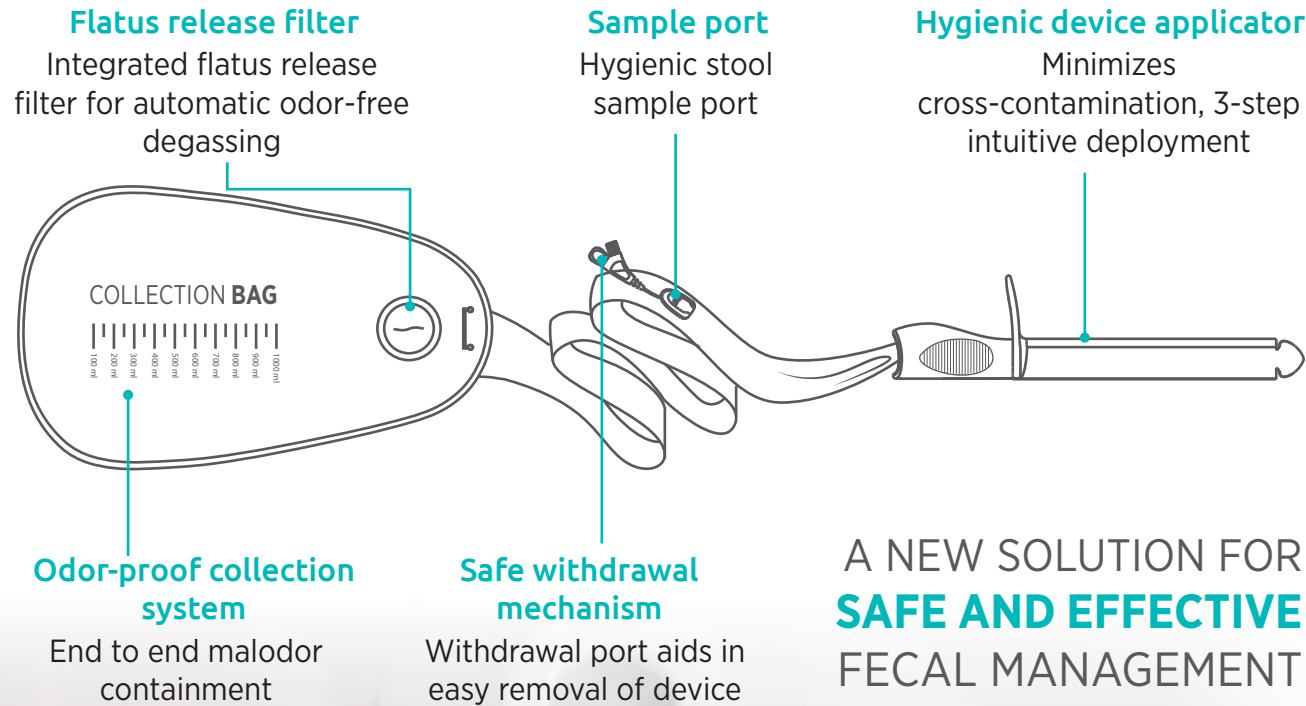
Qora™

Stool Management Kit

Prevent Skin Breakdown

Step up Infection Control

Expedite Recovery



CONTAIN
fecal exudate to reduce spread of nosocomial infections

PROTECT
patients and healthcare workers from fecal contamination

SAVE
money by avoiding costly fines due to HACs

Are You Using The Safest Mode Of Fecal Containment?

DIAPERS AND ABSORBENT PADS

Open system facilitates cross-contamination

Leads to skin breakdown, wound contamination (IAD, HAPI)

Time consuming and labor intensive

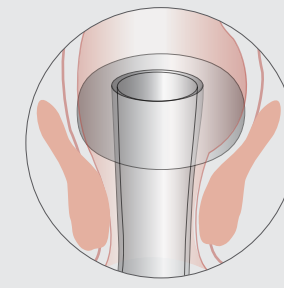


INTRARECTAL BALLOON CATHETERS (IBCs)

High risk of mucosal injury and bleeding

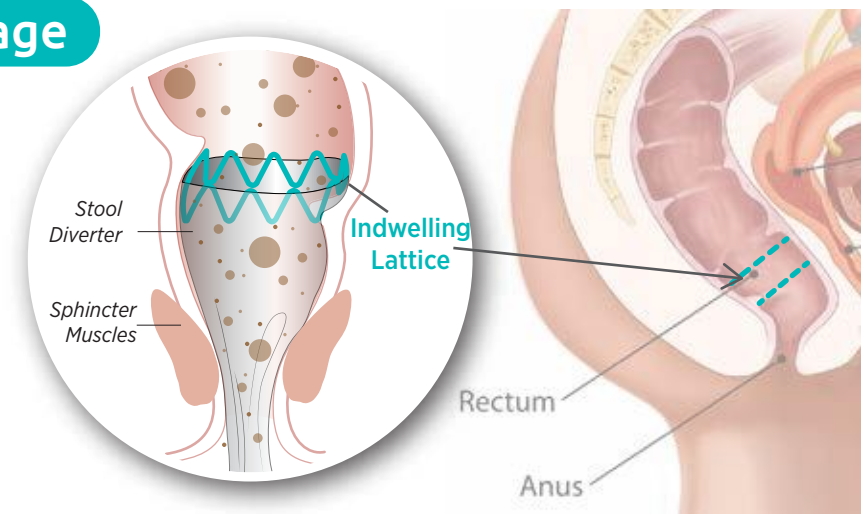
Clinically shown to cause sphincter dysfunction and anal erosion^{1,2}

Narrow lumen for fecal diversion that gets obstructed easily



Qora's Clinical Advantage

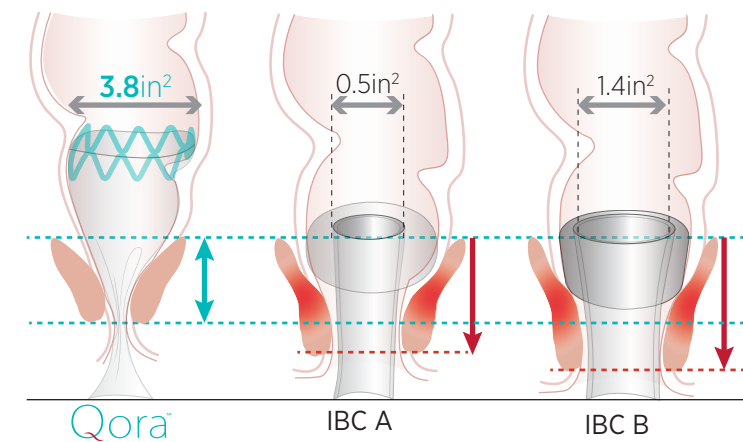
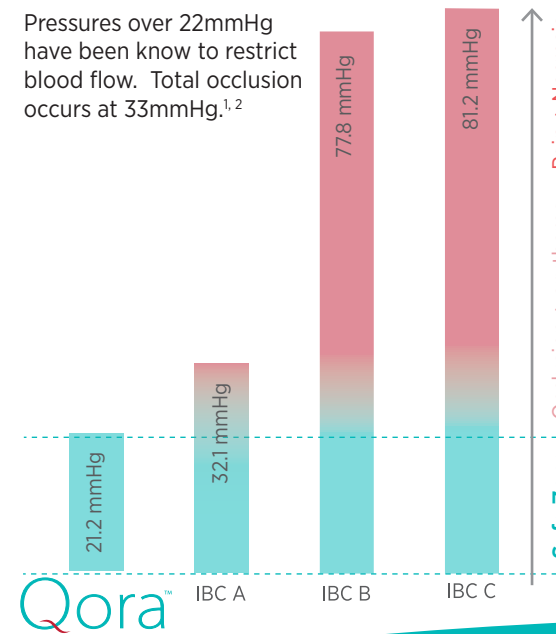
Qora™ anchors above the sphincter thus, eliminates potential of sphincter dysfunction and pain sensation.



Radial pressure of Qora is **34-74% less** than IBCs

Qora's lumen size is **1.7X - 6.6X larger** than IBCs

Pressures over 22mmHg have been known to restrict blood flow. Total occlusion occurs at 33mmHg.^{1,2}



Larger lumen size allows easier stool flow and significantly reduces incidences of leakage.